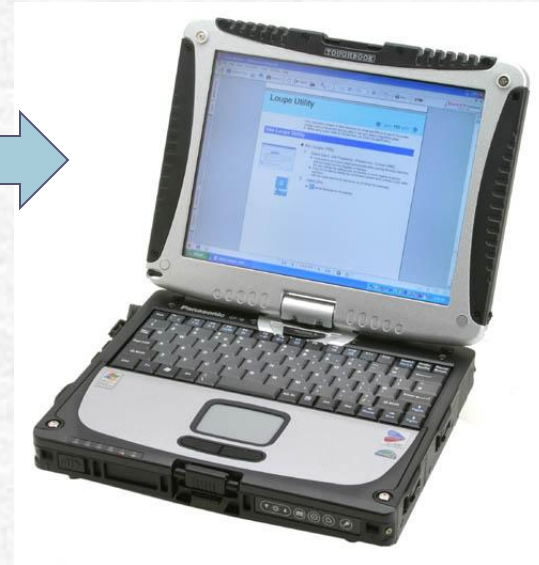


Data Transmission to the Toughbooks



Gary Wyatt, EMT-I

A decorative horizontal band at the top of the slide, featuring a light blue background with several dark blue, wavy, brush-stroke-like lines that create a sense of movement and depth.

How do we do it?

A single, dark blue, wavy line that spans the width of the slide, mirroring the style of the lines in the top decorative band.

Transmitting Data to the Tough Books!

- Run the call just like Normal.
 - Create a incident in Field Bridge
- Prior to arrival or after delivering the patient to the ED
 - Send the data to the Tough Book.
 - Vitals (Pulse, Pulse Ox readings, BP's, ECG's, 12-Lead's) will be sent to the computer.
 - Import the information into the Incident record
- Print (With Wave Forms)



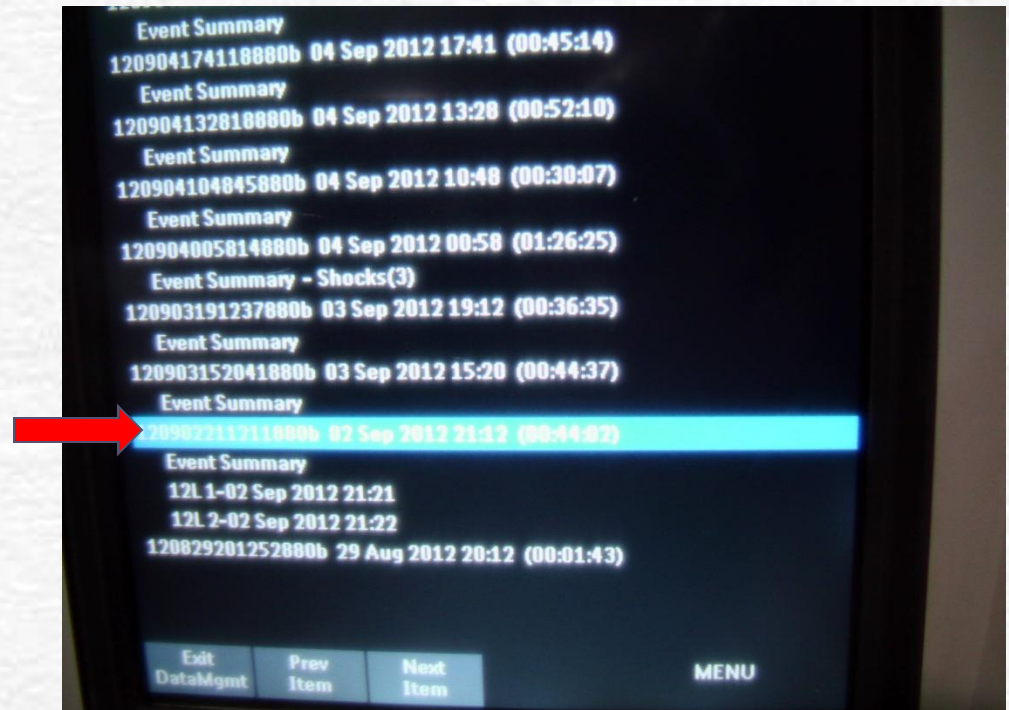
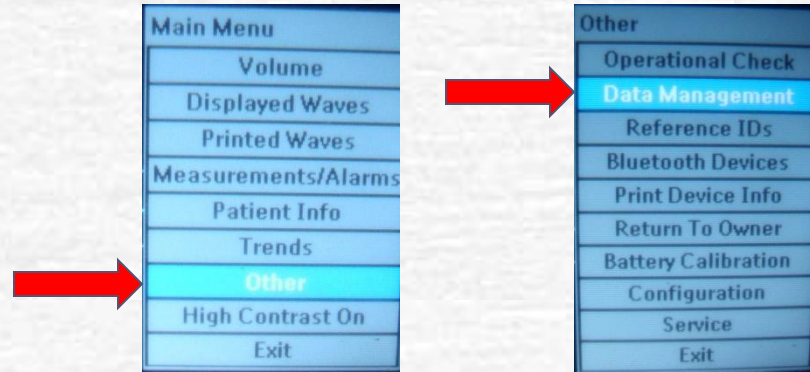
OK, OK, OK
Sounds simple but...

How do we do it?



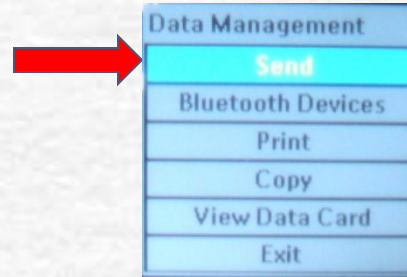
Transmitting Data to the Tough Books!

- 1) Press the Check box
- 2) Select "Other"
- 3) Select "Data Management"
 - Acknowledge the alert
- 4) Highlight the incident
- 5) Press the check box

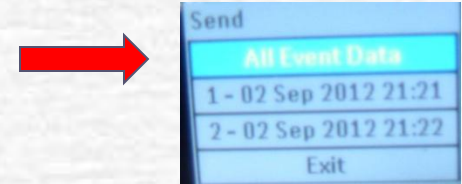


Transmitting Data to the Tough Books!

1) Select send



2) Select "All Event Data"



3) Select the Tough Book

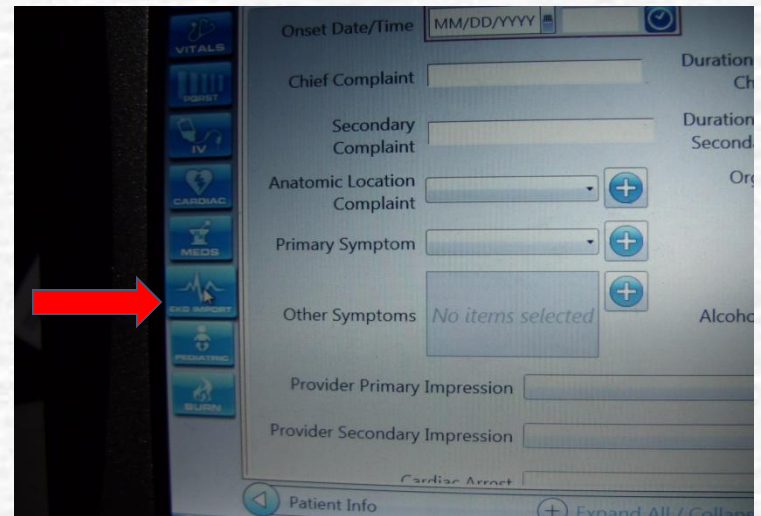
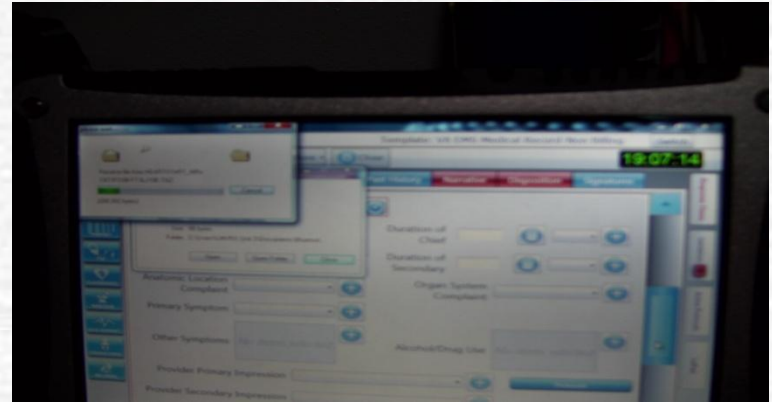


4) You will see a few screens indicating the status of data being transmitted. Exit when completed

5) Now lets go to the Tough Book!!

Transmitting Data to the Tough Books!

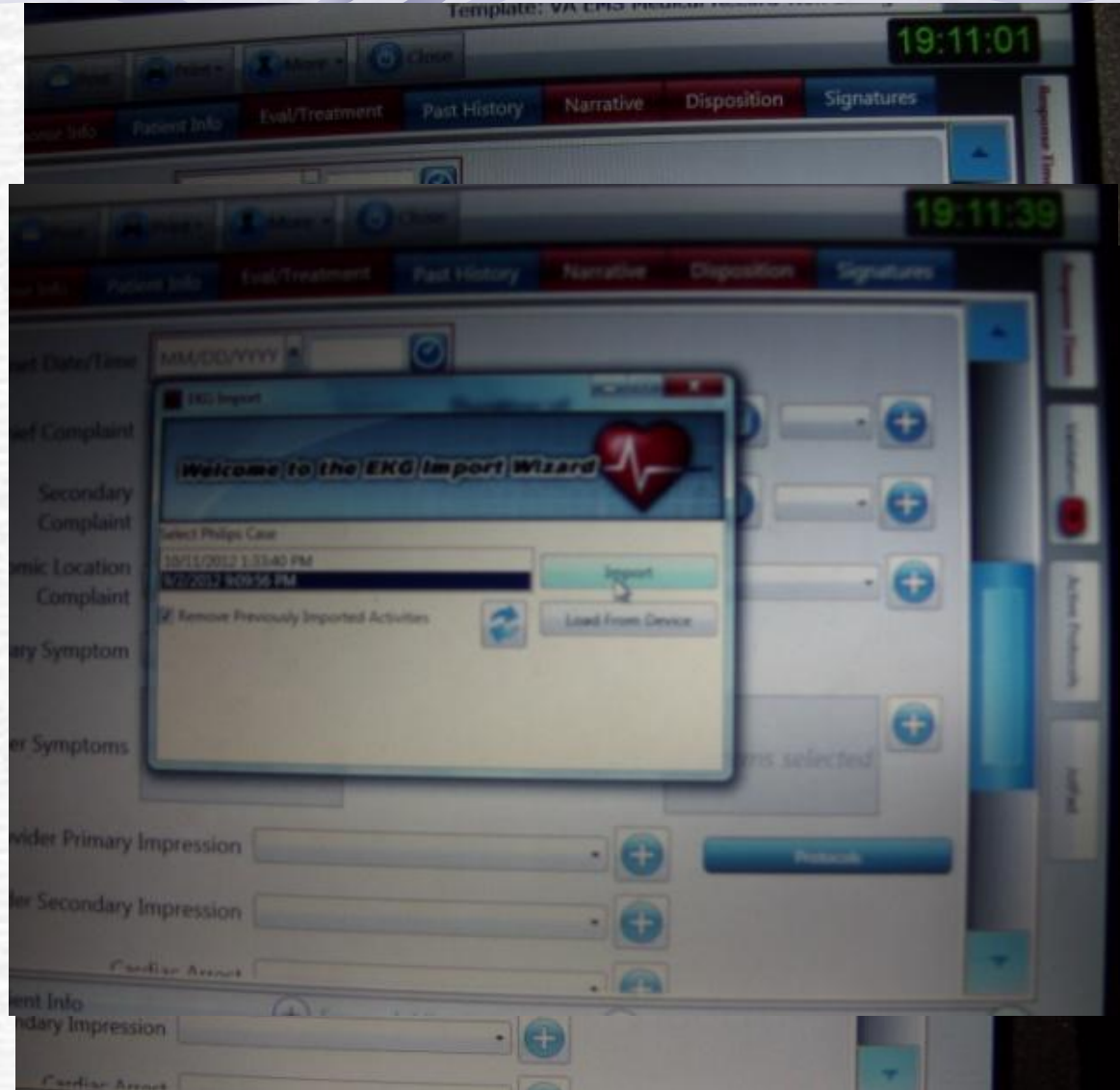
- 1) You will notice several screens opening and staying on the monitor.
- 2) Close all of these screens when file transfer is complete.
- 3) On the Tough Book incident along the left column select "Import ECG"



Transmitting Data to the Tough Books!

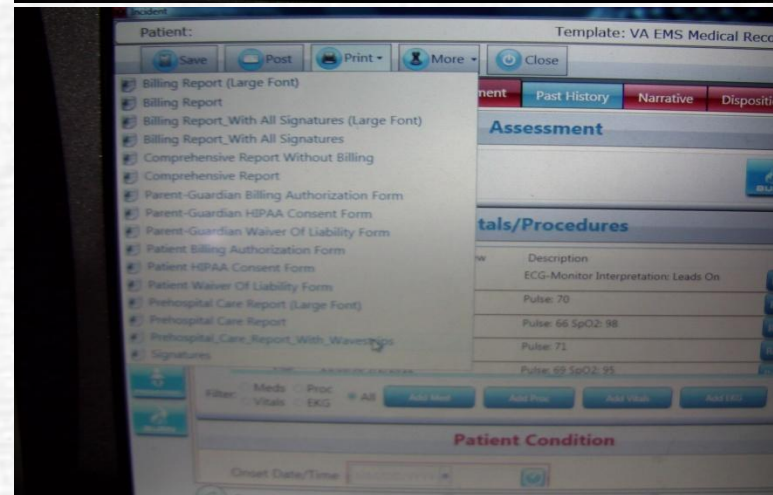
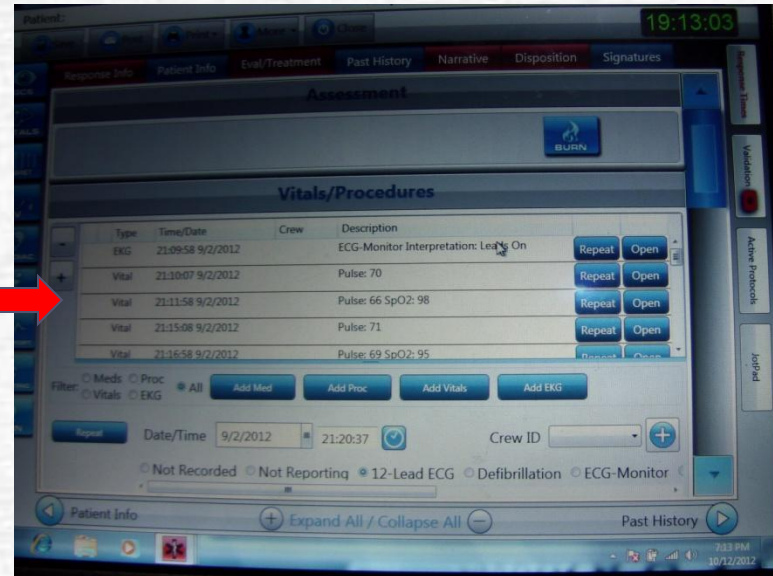
- 1) Select "Load from Device"
- 2) Make sure "Bluetooth Device" is checked
- 3) Highlight the incident –verify the date/time
- 4) Check the remove previous entries
- 5) Select import

- Your Done!
- Now lets go look at the data and how to print it all



Transmitting Data to the Tough Books!

- 1) Notice each Vital is listed as a separate entry along with the date/time it was recorded
- 2) Even ECG data recorded through the Defib pads and ECG 5-lead or 12-Leads are recorded in the record
- 3) When printing Select "Pre-Hospital care report with Waveforms"



Now its Movie time!

- It's a little fuzzy but you will get a chance to see the steps done in the right order.

Contacts

☞ Data Transmission problems

- Gary Wyatt
- John Lye

Keep up the good work and THANK YOU!